

# Guest Faculty

**Frederick G. Freitag, DO**  
Assistant Director  
Diamond Head Clinic  
Chicago, Illinois

# Loyola Faculty

**Jorge Asconapé, MD**  
Professor  
Department of Neurology

**Hrayr Attarian, MD**  
Associate Professor,  
Department of Neurology and Medicine

**Maria Baldwin, MD**  
Assistant Professor  
Department of Neurology

**José Biller, MD, FACP, FAAN, FAHA**  
Professor and Chair,  
Department of Neurology

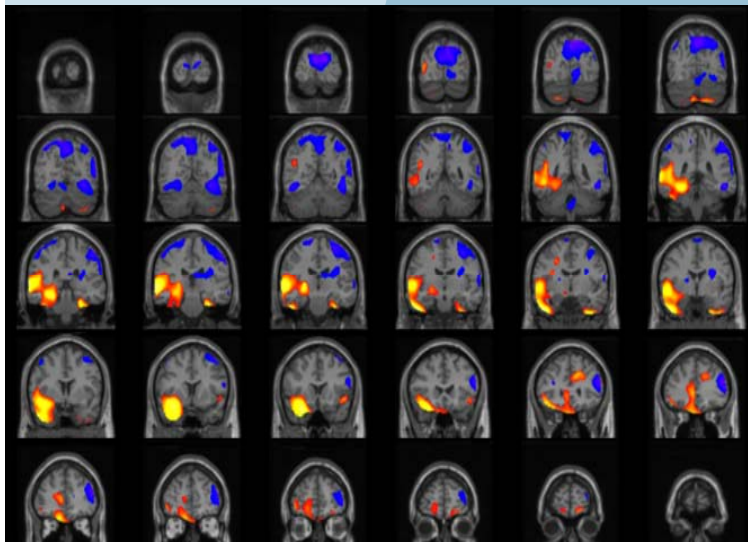
**Rima Dafer, MD, MPH**  
Associate Professor,  
Department of Neurology

**Ninith Kartha, MD**  
Assistant Professor  
Department of Neurology

**Matthew McCoyd, MD**  
Assistant Professor  
Department of Neurology

**Eugene Schnitzler, MD**  
Associate Professor,  
Department of Neurology

# PAROXYSMAL NEUROLOGY SYMPOSIUM April 7, 2010



Scheinost D, Teisseyre TZ, Distasio M, DeSalvo MN, Papademetris X, Blumentfeld H (2009). New Open Source Ictal SPECT Analysis Method Implemented in BioImage Suite. *Epilepsia*. In Press 2010.

**Course Director,**  
**Hrayr Attarian, MD**

*Sponsored by:*

**Loyola University Chicago**  
**Stritch School of Medicine**  
**Department of Neurology and the**  
**Division of Continuing Medical Education**



**LOYOLA  
MEDICINE**

*Loyola University Chicago*  
*Stritch School of Medicine*

# AGENDA

- 7:30 a.m. Check-in
- 8:00 a.m. Opening Remarks  
Hrayr Attarian, MD
- 8:10 a.m. TIAs a Modern Approach  
José Biller, MD, FACP, FAAN, FAHA
- 8:55 a.m. Cluster Headaches  
Frederick G. Freitag, DO
- 9:40 a.m. Trigeminal Autonomic Cephalgias  
Rima Dafer, MD, MPH
- 10:25 a.m. Break
- 10:40 p.m. Paroxysmal Movement Disorders  
Ninith Kartha, MD
- 11:25 a.m. Periodic Paralysis  
Matthew McCoyd, MD
- 12:10 p.m. Lunch
- 1:10 p.m. Parasomnias  
Hrayr Attarian, MD
- 1:55 p.m. Partial Seizures  
Jorge Asconapé, MD
- 2:40 p.m. Break
- 2:55 p.m. Mimickers of epilepsy  
Maria Baldwin, MD
- 3:40 p.m. Non-epileptic Paroxysmal Disorders  
in Infants and Young Children  
Eugene Schnitzler, MD
- 4:30 p.m. Evaluation and adjournment

## COURSE OBJECTIVES

### Management of TIAs and uncommon forms of headaches and head pain

- Identify newer management methods of TIAs
- Discuss Cluster Headaches
- Describe Trigeminal Autonomic Cephalgias

### Motor paroxysms of wakefulness and sleep

- Differentiate benign from injurious parasomnias
- Describe paroxysmal movement disorders
- Explain mechanisms behind periodic paralyses

### Epileptic seizures and non epileptic mimickers of seizures in children and adults

- Identify the multiple mimickers of epilepsy
- Demonstrate knowledge about the treatment of complex partial seizures
- Differentiate seizures from non seizure events

## ACCREDITATION

The Loyola University Chicago Stritch School of Medicine is accredited by the Accreditation Council for Continuing Medical Education to provide continuing medical education for physicians.

The Loyola University Chicago Stritch School of Medicine designates this educational activity for a maximum of 6.75 AMA PRA Category 1 Credit(s)<sup>TM</sup>. Physicians should only claim credit commensurate with the extent of their participation in the activity.

## GENERAL INFORMATION

### TARGET AUDIENCE:

This activity is designed for Neurologists and other health professionals interested in paroxysmal neurological events.

### CONFERENCE LOCATION:

Loyola University Chicago  
Stritch School of Medicine, Tobin Hall  
2160 South First Avenue  
Maywood, Illinois, 60153

### SPECIAL NEEDS:

We welcome all registrants to this activity. If you need special accommodations in order to participate, we will try to provide for your needs. Please submit a written request one month prior to the conference to receive services.

### For TRAVEL DIRECTIONS to our campus please visit our web site at:

<http://www.stritch.luc.edu/cme> and click on "upcoming events"

### ADDITIONAL INFORMATION:

Contact the Division of CME during business hours, phone (708) 216-3236 or (800) 424-4850 Fax: (708) 216-5318



**LOYOLA  
MEDICINE**

Loyola University Chicago  
Stritch School of Medicine

## Paroxysmal Neurology Symposium Registration Wednesday, April 7, 2010

Pre-registration is required for the course and your response is requested no later than **Monday, March 29th** to secure your reservation and course material for this conference.

The registration fee for this course is as follows:

(Please check below and enclose payment with registration)

- o \$50 Physicians
- o \$20 Fellows / Residents / Interns/Nurses and Ancillary

**Registration fee for this course is non-refundable**

### **Please mail completed registration forms to:**

Loyola University Chicago, Continuing Medical Education  
2160 South First Avenue, Building 120, Room 310  
Maywood, Illinois, 60153

**Or fax with credit card information to:**

**(708) 216-5318**

Name: \_\_\_\_\_

Degree: \_\_\_\_\_

Address: \_\_\_\_\_

City: \_\_\_\_\_ State: \_\_\_\_\_ Zip: \_\_\_\_\_

Email: \_\_\_\_\_

Phone: \_\_\_\_\_ Fax: \_\_\_\_\_

Select method of payment:

- o Check made payable to: Loyola University Chicago CME
- o Mastercard      o Visa      o Discover

Account #: \_\_\_\_\_

Signature: \_\_\_\_\_ Exp date: \_\_\_\_\_

Billing Address & Zip: \_\_\_\_\_

Please tear off this portion and mail